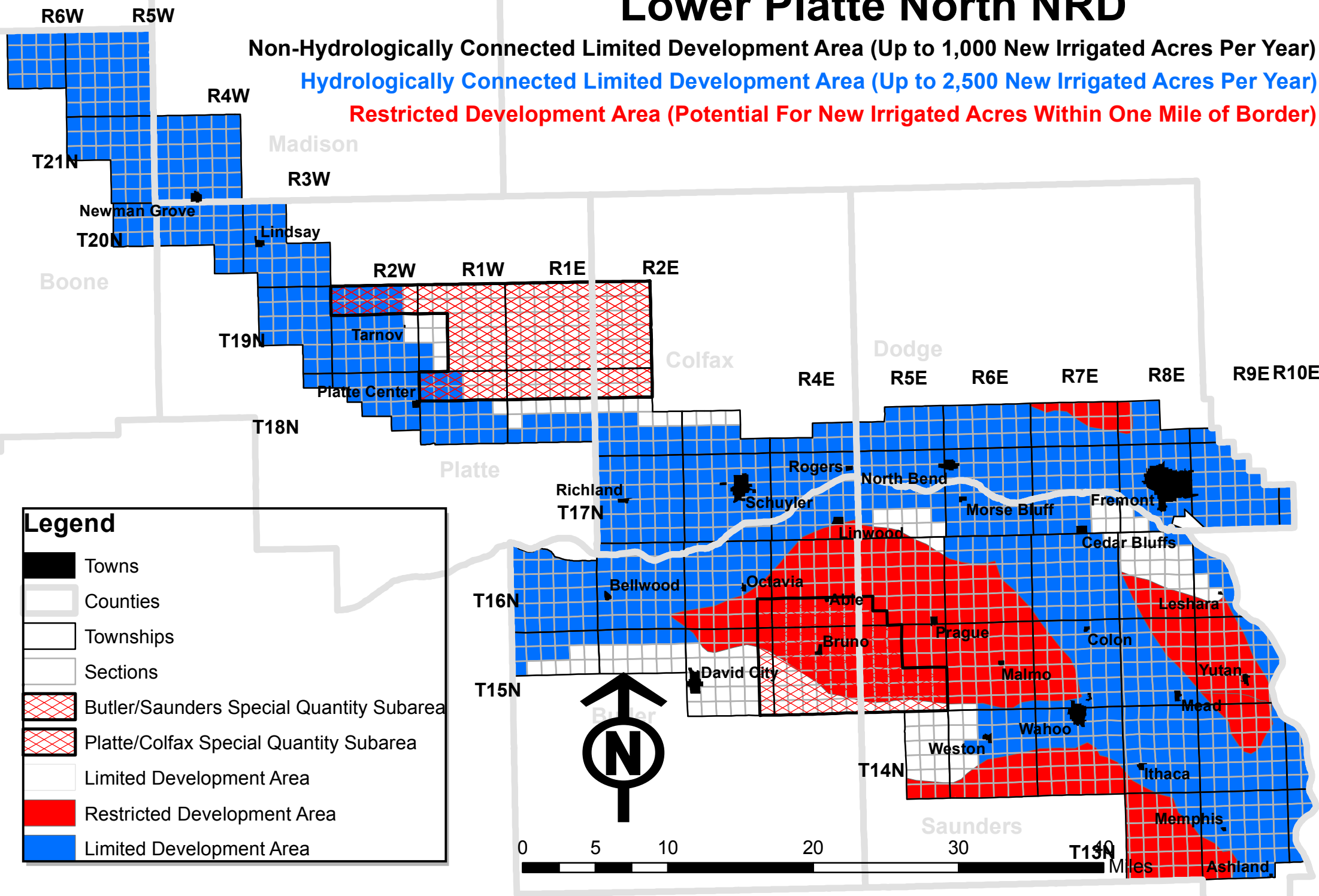


# Lower Platte North NRD

Non-Hydrologically Connected Limited Development Area (Up to 1,000 New Irrigated Acres Per Year)

Hydrologically Connected Limited Development Area (Up to 2,500 New Irrigated Acres Per Year)

Restricted Development Area (Potential For New Irrigated Acres Within One Mile of Border)



## Legend

- Towns
- Counties
- Townships
- Sections
- Butler/Saunders Special Quantity Subarea
- Platte/Colfax Special Quantity Subarea
- Limited Development Area
- Restricted Development Area
- Limited Development Area

